

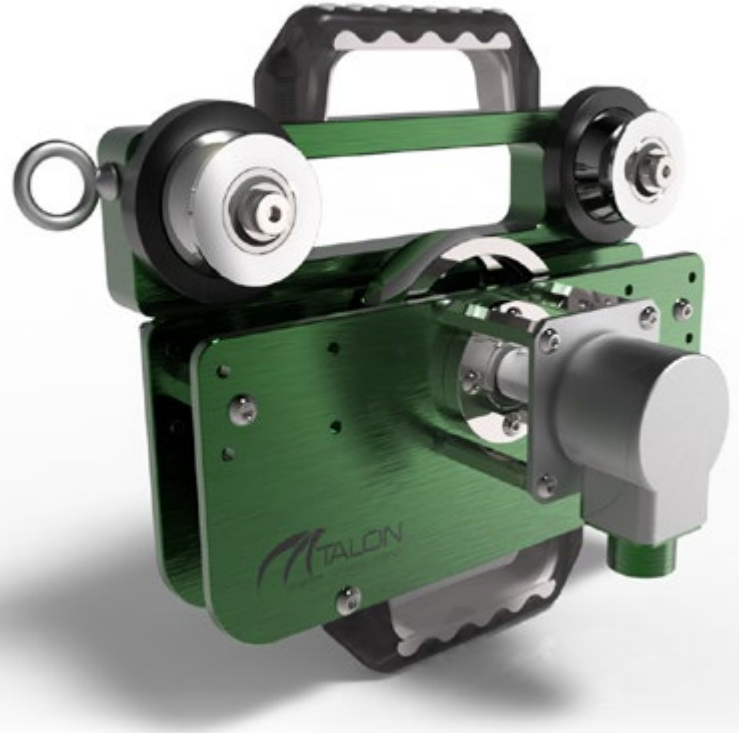


BTD's Cable Rider™ is the ideal choice for measuring depth/length of cables, wires, wireline, braided line, fiber optic line, etc. The Cable Rider™ can function either as the primary depth source (with a known 1' drive wheel circumference and known number of pulses/revolution from the encoder) or as an additional independent measurement system. It works great for third party companies who need a depth input for their systems and cannot easily integrate into existing measurement device(s).

Lightweight, portable and strong with up to 73 lbs. of clamping force, the Cable Rider™ also makes an excellent back up for primary depth counter systems in the event of failure. The Cable Rider™ can also be configured to work with a wide variety of encoders.

A cam lever mechanism makes opening and mounting the Cable Rider™ easy. The handles and eyebolts give the user multiple options for tying it off and keeping it secure in one position while on a moving line. A telescoping stiff-arm is also available. The arm is adjustable in length and can be attached to another solid structure to keep the Cable Rider™ in position (typically in front of the existing measurement/tension system).

The Cable Rider™ can be easily configured for a wide range of cable diameters from .077" to 1-1/8". This is done simply by unscrewing the guide wheel bolt, sliding off the existing guide wheel, sliding on the new guide wheel, and re-tightening the bolt. See tables below for details:



# CABLE RIDER™

.wireline depth meter

Wire Diameter Range	Drive Wheel Circumference	Encoder Pulses per Revolution	Dimensions	Weight
Cable Rider™ 0.072" to 1-1/8" (1.8 to 28.6 mm)	1 foot (305 mm)	200 Standard Encoder	13.3" x 10.4" x 8.5" (338 x 264 x 216mm)	10.5 lbs. 4.8 kg

	Slickline	E-Line / Other Wire	Sand Line / Other Wire
Cable Rider™ Guide Wheels Wire Diameter Range	0.072" to 0.125" (1.8 to 3.2mm)	3/16" to 3/4" (4.7 to 19.1mm)	3/4" to 1-1/8" (19.1 to 28.6mm)